

Visual PlantEngineer

Visual PlantENGINEER

Features 2010

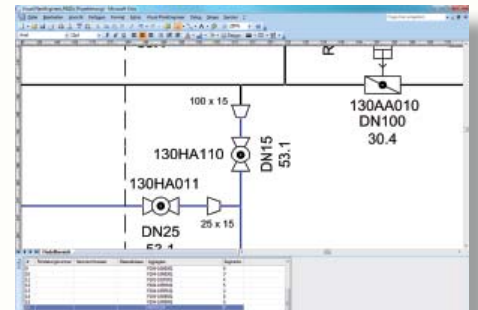
Significant improvements to Visual PlantEngineer – such as the Pipe Manager, the innovative Report Designer and the visualization of status information – provide more support for you than ever before both in the planning process and with the documentation of your industrial plants. Simplify and optimize your work processes by creating a uniform standard throughout your enterprise, while achieving an enhanced quality for your data.

FEATURES 2010

The latest version of Visual PlantEngineer offers the following improvements and extensions, which will enable you to carry out the work processes in the construction of process plants even more efficiently and simply.

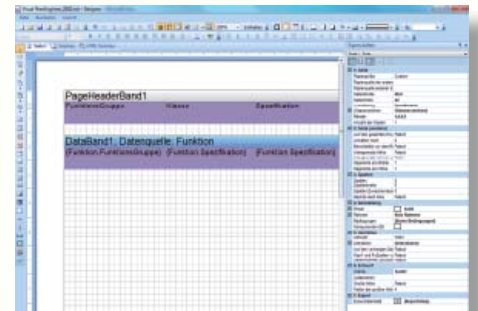
1. Innovative Pipe Manager

The innovative Pipe Manager of Visual PlantEngineer provides greater transparency in the planning process. All segments of the piping selected are highlighted in color. Short circuits, sections of pipe that are not connected, and double piping numbers are determined automatically and marked in color. Errors are recognized more quickly and can be corrected already in the early planning phases. Piping components inherit the values of the nominal diameter and the pressure rating from the pipe they are part of.



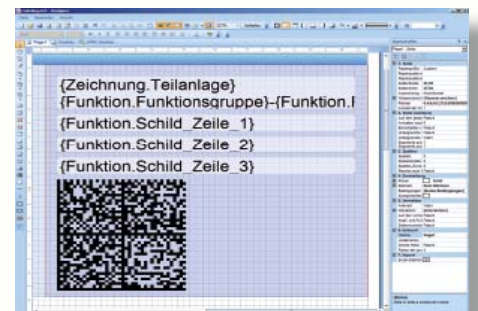
2. Flexible Report Designer

Carry out the planning and documentation of your process plants with an ease and reliability never before achieved. Create without difficulty the most varied types of lists with the new Report Designer. Special design wishes of your clients can be achieved in a few steps. Printing of the lists by mouse-click is a matter of seconds. All important data is generated directly from the project. This means that transference mistakes and loss of information, which are common results of media disruption, are things of the past.



3. Comfortable Label Design

The innovative label design, which is a further highlight of Visual PlantEngineer, offers you greater flexibility. Identification and the freely selectable component data can be arranged on the label by drag & drop. You can choose from various standard formats or adapt the size and form of the labels to meet your needs. The identification can also be put on the label as a barcode.



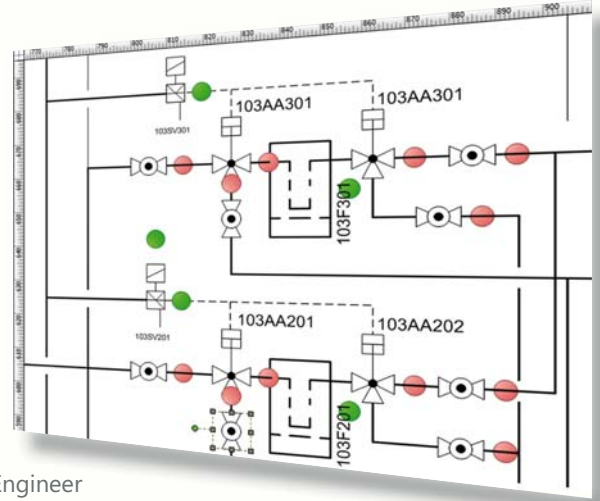
4. Mobile Application VPE Mobile

Access the checklists for the installation as well as the data for commissioning and maintenance on-site by means of smartphone or PDA. VPE Mobile reads the barcode on the label by means of a scanner and makes all component data directly available. Changes can be made immediately. By enabling mobile data access during operation and maintenance of their plants, this feature offers your clients a high added value.



- 5. Visualization of status information**
 The function data graphics provides color visualization of various types of status information such as the status of deliveries, commissioning and maintenance. This enables you to maintain control over critical phases of the project and to react immediately to errors and emerging requirements.

- 6. Enhanced Workflow Orientation**
 Thanks to the ease of integration into IT infrastructures Visual PlantEngineer supports the whole planning process and the maintenance of process plants. Intelligent functions are always accessible, at every phase of the project.



Design – team-oriented and tailored to your needs

Develop your plant concept as a team from the first idea to the detail planning. The integrative system design makes possible a dynamic development in a discourse encompassing everyone involved in the project.

In addition to process engineering, contiguous departments such as electrical planning, I&C, or 3D design can be integrated, requiring only the click of a key to be supplied as needed with electrical components, I&C, or piping lists.

Procurement – optimal integration

Continue by optimizing your procurement process by data exchange between P&ID and the ERP system. Generate on mouse-click project bills of materials from the P&ID. The search for required items, request for quotes, and ordering are carried out by the ERP system. By means of data synchronization required information on the items ordered is passed on to the P&ID. Finally, information on the order and delivery status of the items ordered can be shown in color in the P&ID.

Logistics – at the right place at the right time

Parts of the plant that are delivered or installed together are identified by an installation frame which enhances the organization of construction site logistics. This ensures that parts of the plant are delivered at the right time and to the right place.

Installation – always up to date

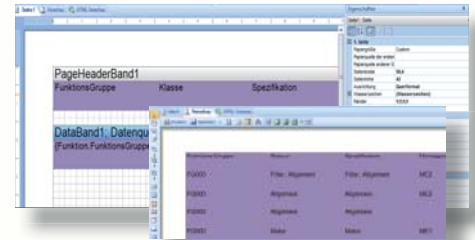
Installation checklists allow you to track at any time the status of the project. Individual tasks are worked through in a structured manner and you continually have an overview of the work that still has to be done.

Commissioning – achieve your goal more quickly

Recording of commissioning parameters and current data enables the creation of an As-Built documentation by mouse-click. For greater mobility this data can be accessed by smartphone or PDA on-site.

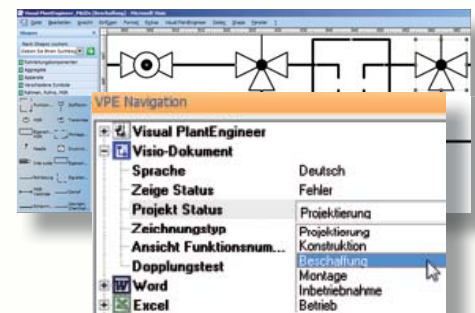
7. Expanded functions in the creation of reports

In addition to project bills of materials you can create in Excel pre-defined reports for aggregates, apparatus, material flows or electrical components. A further option is the printout of a detailed data sheet for every component. An added benefit is the editing of labels for the components of the plant directly from the process flow diagram.



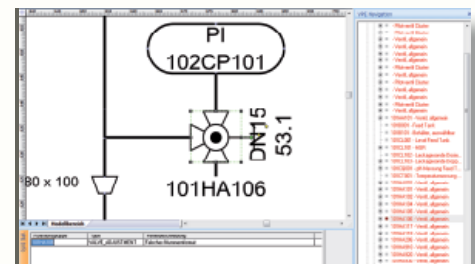
8. Flexible view structure

The flexible view structure enables the different departments to work on the same document using separate task-related views. Traditional paper-based interfaces are replaced by a seamless communication between the different areas of responsibility. Errors due to lack of media consistency, errors in the transfer of data, and redundancy are reduced to a minimum thanks to the uniform data model. The whole planning process becomes more efficient due to the task-related work process - from the first drafts, to the detailed engineering, through to the commissioning of the plant.



9. Automatic error report in the case of duplicate designations

Every component of the plant is identified unambiguously. Duplicate designations are automatically recognized as errors and indicated in color without the workflow being interrupted.



10. Significant enhancement of performance

The proven functions of Visual PlantEngineer have been further developed from the perspective of a uniform and integrated workflow. The speed of the application has been significantly increased. You will experience substantial improvements on initializing large documents, updating of object properties, and accessing different language settings, as well as in the data output to Microsoft Excel® and Microsoft Word®.

Ready for success!

Contact:

X-Visual Technologies GmbH
 Rudower Chaussee 29
 D-12489 Berlin Adlershof
 Tel. +49 (30) 6392 6125
 Fax +49 (30) 6392 6127
 info@x-visual.net

X + VISUAL

Microsoft
 GOLD CERTIFIED

Partner

Microsoft
 Office Visio