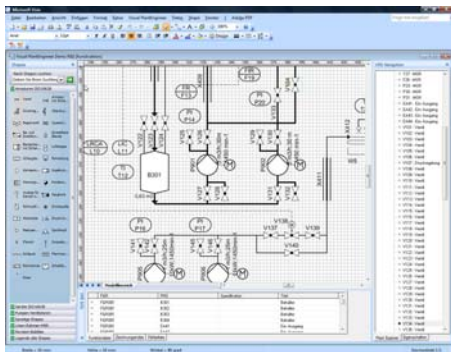


## X-VISUAL TECHNOLOGIES

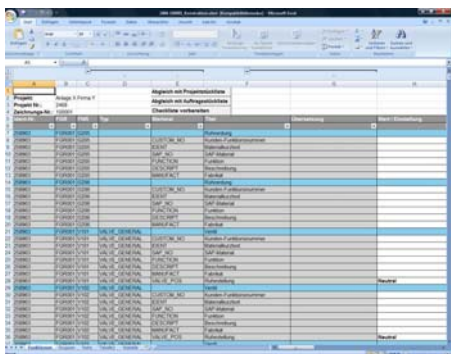
SIMPLIFY YOUR ENGINEERING

**X-Visual Technologies** has specialized in the design and implementation of sophisticated Microsoft-Visio solutions for Engineering and documentations of process plants. Since 2004 X-Visual Technologies has been located at Adlershof in Berlin, one of Europe's largest science and technology campus, and its biggest media location.

With **Visual PlantEngineer** we offer a software application for planning the construction and management of process plants. **Visual PlantEngineer** is a P&ID design application for process plants. Based on Microsoft Visio™, it enables complex P&IDs to be created satisfying ISO 10628. We specialize in the development of intelligent software solutions for visualizing, evaluating and administering the components and processes of industrial facilities. The engineering solution we offer consist of innovative software modules, standard applications and a central database. Our newly developed application Visual PlantEngineer is being employed successfully, providing greater transparency in the implementation of automation systems.



Technically, our solution is a sophisticated variant of the visualization software Visio from Microsoft, which we have enhanced with our own modules and optimized for the planning, documentation industrial plants. Making use of predefined graphic elements, Microsoft Visio facilitates the creation of complex plans and diagrams, as well as the schematic representation of technical processes.



Project No.	Project Name	Project Status	Project Manager	Project Start	Project End	Project Budget	Project Cost	Project Profit
1001	Plant A	Completed	John Doe	2010-01-01	2010-12-31	1000000	800000	200000
1002	Plant B	In Progress	Jane Smith	2011-01-01	2011-12-31	1500000	1200000	300000
1003	Plant C	Planned	Mike Johnson	2012-01-01	2012-12-31	2000000	0	0
1004	Plant D	Completed	Sarah Brown	2009-01-01	2009-12-31	800000	600000	200000
1005	Plant E	In Progress	David White	2011-06-01	2011-12-31	1200000	900000	300000

By means of Microsoft Excel the data can then be evaluated, filtered, sorted and further processed as needed. Since the data are stored in a central database, other areas of the company such as purchasing, controlling and R&D can access the information and use it as an extension of their respective internal data pools.

### PLANNING INDUSTRIAL PLANTS USING MICROSOFT VISIO AND VISUAL PLANT ENGINEER

Planning and documentation in the construction of large facilities are associated with a high rate of data redundancy and errors. We offer a highly effective solution which involves little time and low costs and which provides a thorough rationalization of the planning process.

Our Microsoft Visio-based application offers a powerful new tool for achieving greater efficiency in the construction of technical plants. Process plants can be intuitively planned and documented without the need for a time-consuming and difficult learning curve. The intuitive creation of two-dimensional process flow and piping and instrument diagrams using "intelligent" shapes is made possible by new software components based on Microsoft's Visio. By means of drag&drop the functional design of a plant can be represented schematically easily and quickly using comprehensive DIN/ISO shape libraries. The software

is strictly object-oriented. The shapes used for drawing the schemata are graphic containers for information and properties. Behind the graphic components there are object-specific properties stored as data, as well as code which interacts with this data. Thanks to the individualized definition of the symbol properties, the planning tool can be used in a wide variety of ways. The learning curve is minimized due to the self-explanatory, user-oriented interface from Microsoft Visio.

Integration of the software into other Microsoft Office applications enables the automatic generation from the two-dimensional model of all plans, bills of materials, user manuals, etc. required for planning and installation. By a click of the mouse the data can be evaluated, filtered, sorted and processed electronically as needed in Excel. For example, bills of materials or comprehensive documentation handbooks can be generated in Word within minutes. It is also possible to establish connections with company SAP interfaces. The database connection is compatible with all commonly available systems. Among other functionalities, the software is also multi-lingual and provides, by means of a highlight function, the simple visualization of the construction and commissioning status of a plant.

Our customers include builders, operators and planners of industrial plants.

**Visual PaintEngineer** can be employed in many industrial branches - for example: surface coating, biotechnology, chemical and pharmaceutical industry, processing of textiles, production of food, fertilizer industry and energy production.

**With us as partners you will be able to halve the planning time and costs of your projects while at the same time enhancing the quality of your work.**

Thanks to the automatization of the process-related data-flow, not only is the documentation work reduced by up to 50 percent. Experience has also shown that due above all to the standardized process steps and the avoidance of redundant work significantly fewer mistakes are made in the planning and installation of industrial facilities. As a result, the uniform product and quality standards make possible a company-wide enhancement of quality.

Contact:  
Jenny Brockel  
Marketing

X-Visual Technologies GmbH  
Rudower Chaussee 29  
12489 Berlin Adlershof  
Germany

T: +49 (30) 6392 6126  
F: +49 (30) 6392 6127  
[jenny.brockel@x-visual.net](mailto:jenny.brockel@x-visual.net)  
[www.x-visual.net](http://www.x-visual.net)

